

2023 annual report to the Community

Hallett Cove School

Hallett Cove School number: 640

Partnership: Marion Coast



School principal:

Anthony Hall

Signature

Date of endorsement:

12/02/2024



Context Statement

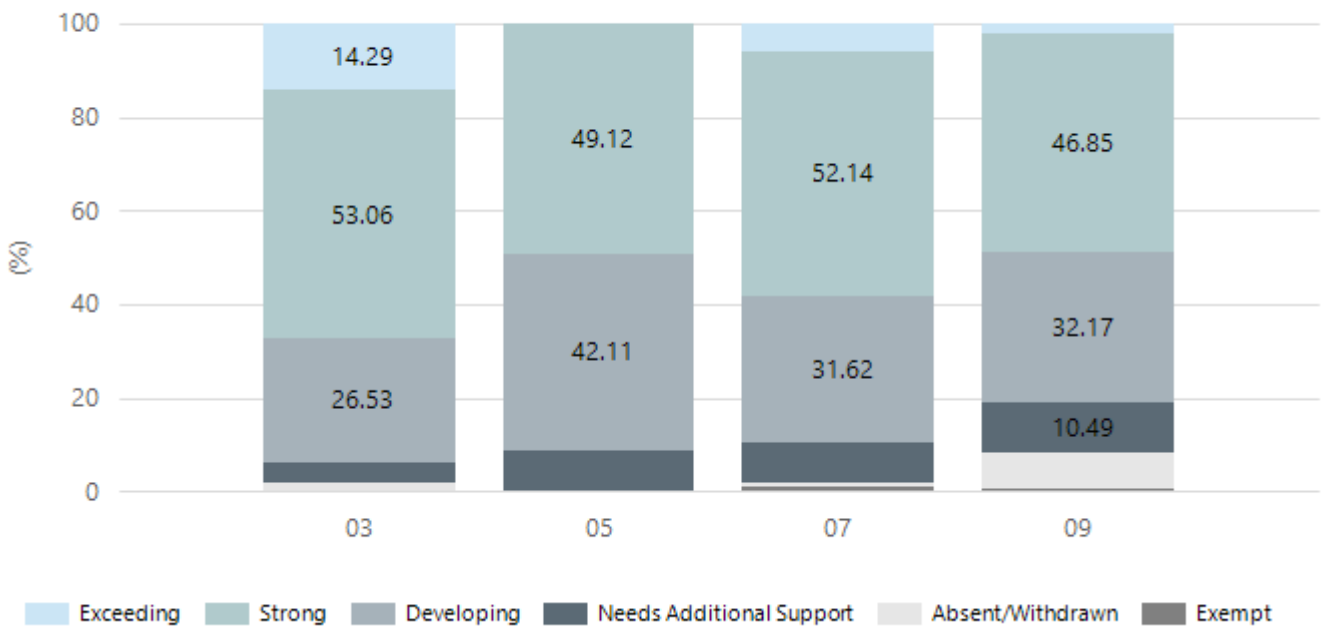
Hallett Cove School caters for students from R-12. At the time of this report, the enrolment in 2023 is 1138. Hallett Cove School is classified as Category 6 on the Department for Education Index of Educational Disadvantage. At the time of this report, the school population includes 3% Aboriginal students, 6% students with disabilities, 5% students with English as an additional language or dialect (EALD) funded background, 2% children/young people in care. Further information about the school is available on the school's website (including its context statement), as well as the My School website.

Performance Summary

NAPLAN Proficiency

In 2023, the Australian Curriculum, Assessment and Reporting Authority (ACARA) - a Commonwealth Independent statutory authority - announced changes to NAPLAN performance reporting. This new way of reporting by ACARA that NAPLAN results from 2023 will not be comparable to previous years. The new approach replaces the previous numerical NAPLAN bands and the national minimum standard.

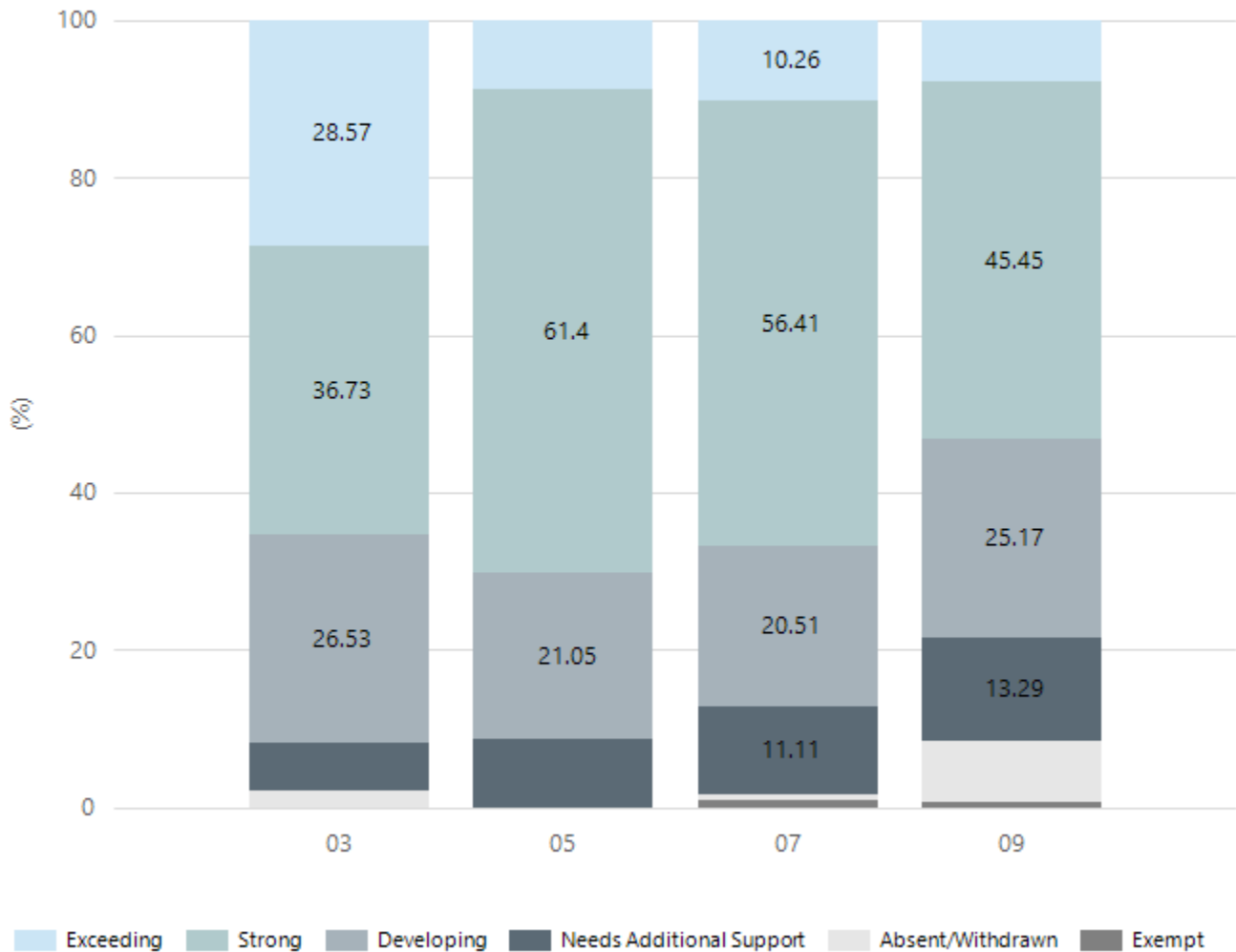
Numeracy



Year Level	03	05	07	09
Exceeding	7	0	7	3
Strong	26	28	61	67
Developing	13	24	37	46
Needs Additional Support	2	5	10	15
Absent/Withdrawn	1	0	1	11
Exempt	0	0	1	1
Total	49	57	117	143

Data Source: Department for Education Assessment Data Holdings, 2023. When there are less than six students in a cohort, no data is supplied.

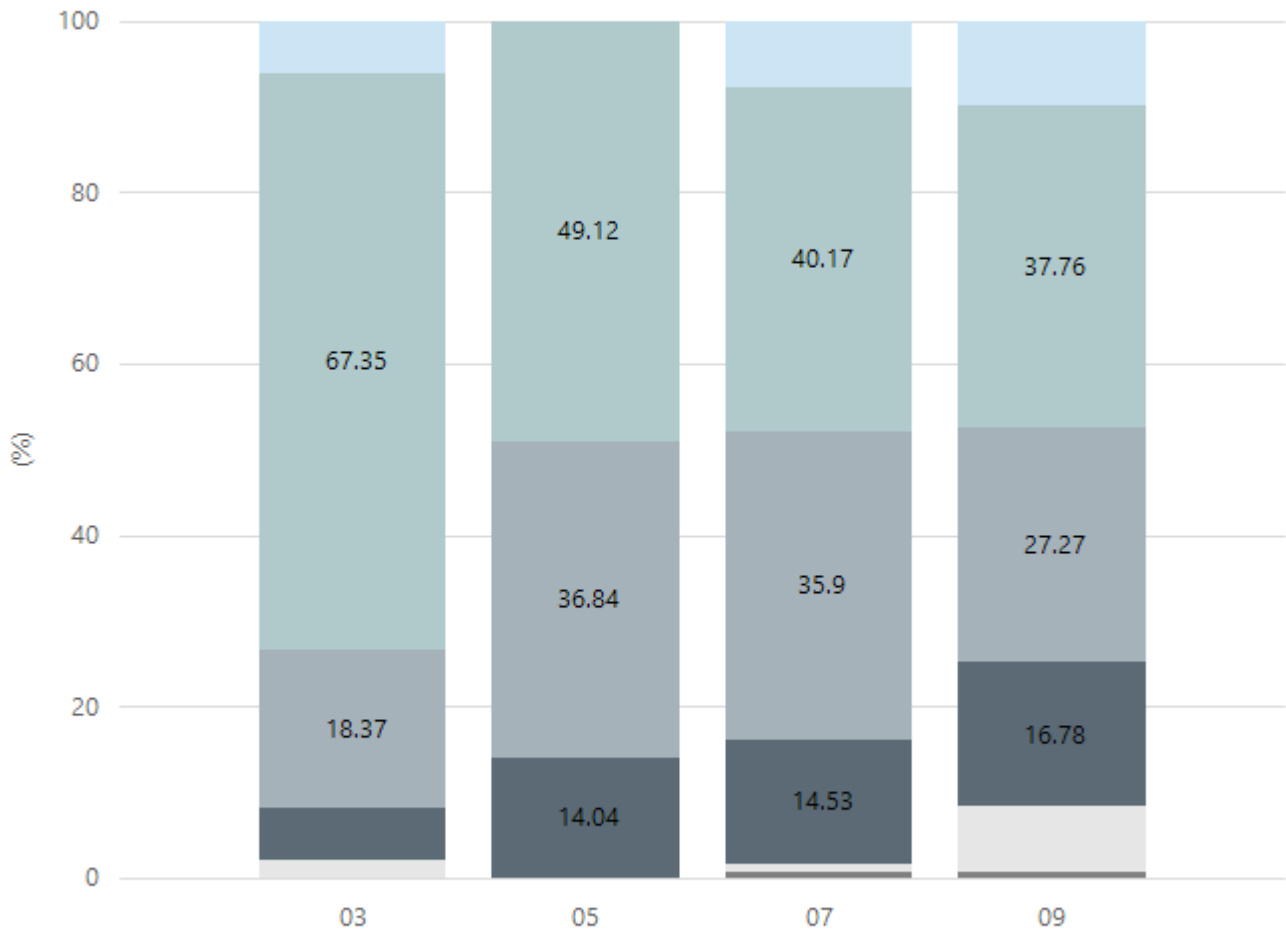
Reading



Year Level	03	05	07	09
Exceeding	14	5	12	11
Strong	18	35	66	65
Developing	13	12	24	36
Needs Additional Support	3	5	13	19
Absent/Withdrawn	1	0	1	11
Exempt	0	0	1	1
Total	49	57	117	143

Data Source: Department for Education Assessment Data Holdings, 2023. When there are less than six students in a cohort, no data is supplied.

Writing

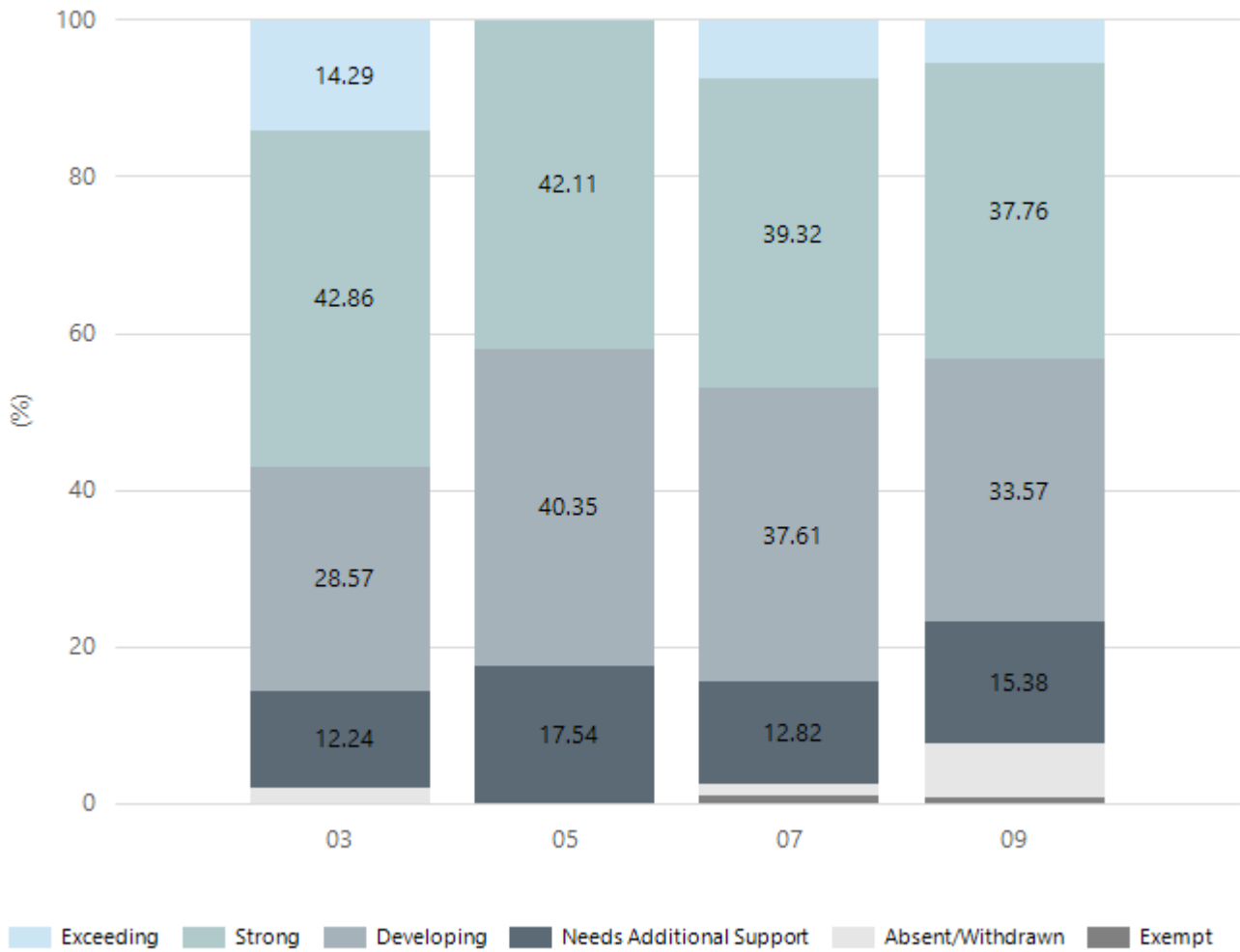


Exceeding Strong Developing Needs Additional Support Absent/Withdrawn Exempt

Year Level	03	05	07	09
Exceeding	3	0	9	14
Strong	33	28	47	54
Developing	9	21	42	39
Needs Additional Support	3	8	17	24
Absent/Withdrawn	1	0	1	11
Exempt	0	0	1	1
Total	49	57	117	143

Data Source: Department for Education Assessment Data Holdings, 2023. When there are less than six students in a cohort, no data is supplied.

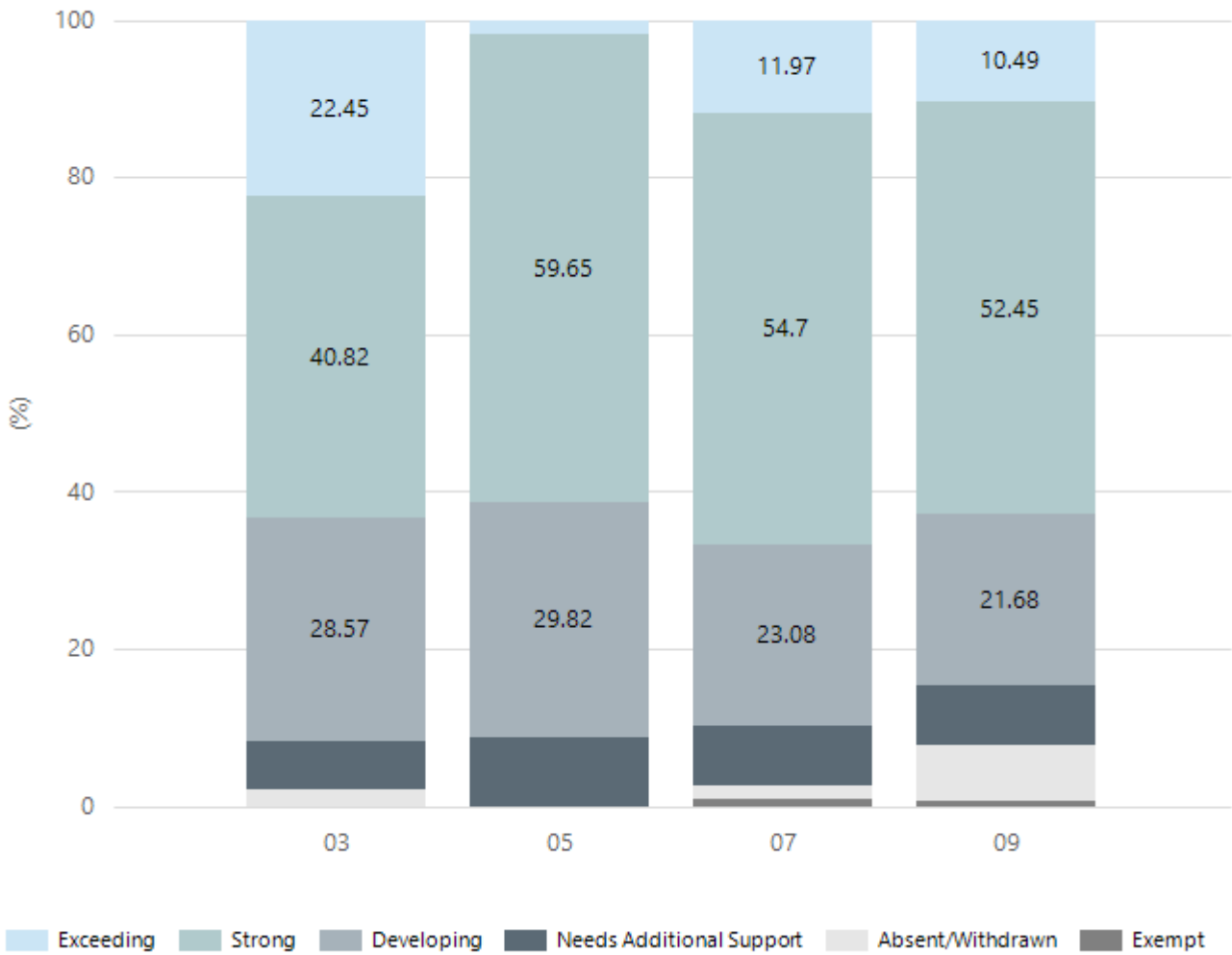
Grammar



Year Level	03	05	07	09
Exceeding	7	0	9	8
Strong	21	24	46	54
Developing	14	23	44	48
Needs Additional Support	6	10	15	22
Absent/Withdrawn	1	0	2	10
Exempt	0	0	1	1
Total	49	57	117	143

Data Source: Department for Education Assessment Data Holdings, 2023. When there are less than six students in a cohort, no data is supplied.

Spelling

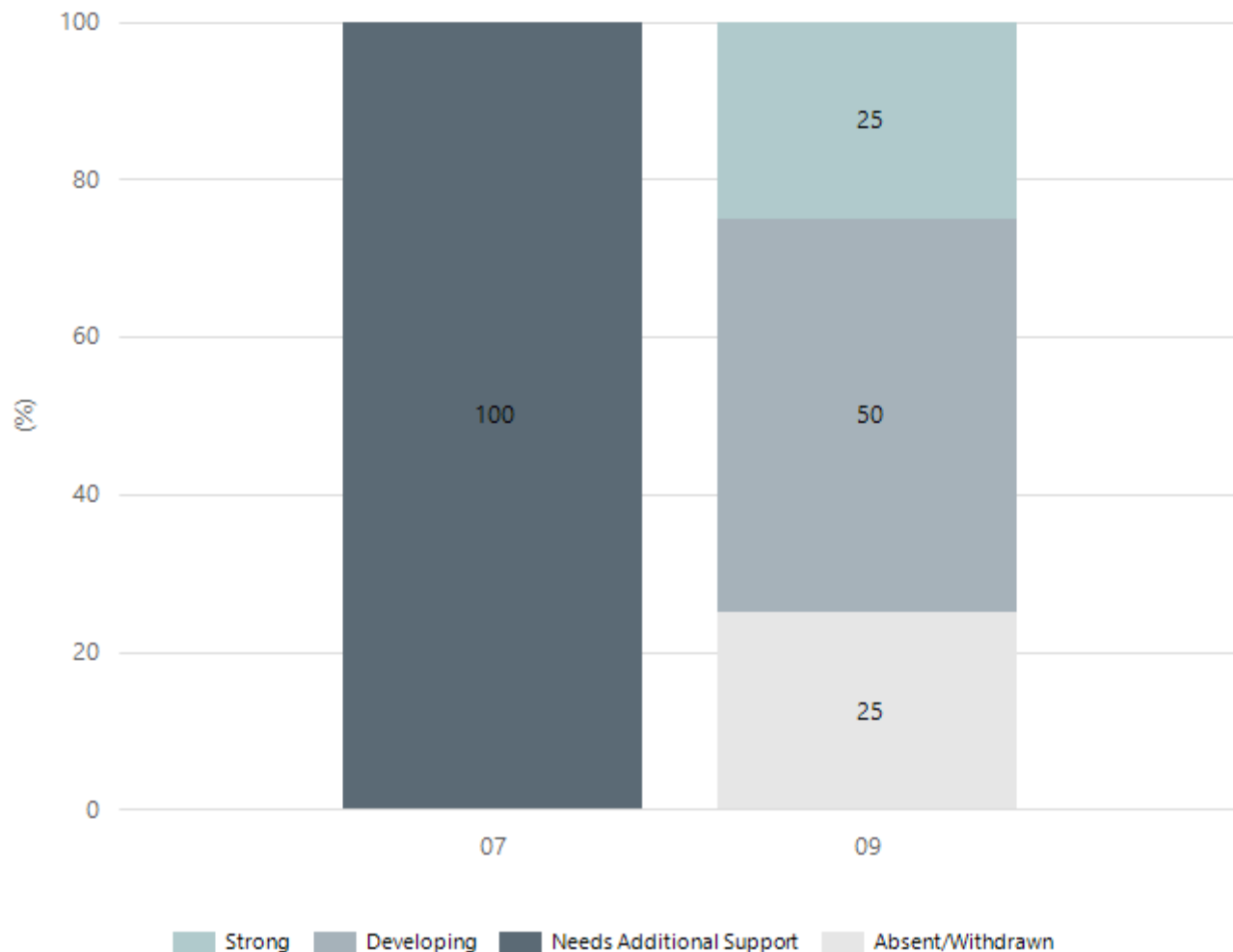


Year Level	03	05	07	09
Exceeding	11	1	14	15
Strong	20	34	64	75
Developing	14	17	27	31
Needs Additional Support	3	5	9	11
Absent/Withdrawn	1	0	2	10
Exempt	0	0	1	1
Total	49	57	117	143

Data Source: Department for Education Assessment Data Holdings, 2023. When there are less than six students in a cohort, no data is supplied.

NAPLAN Proficiency - Aboriginal Learners

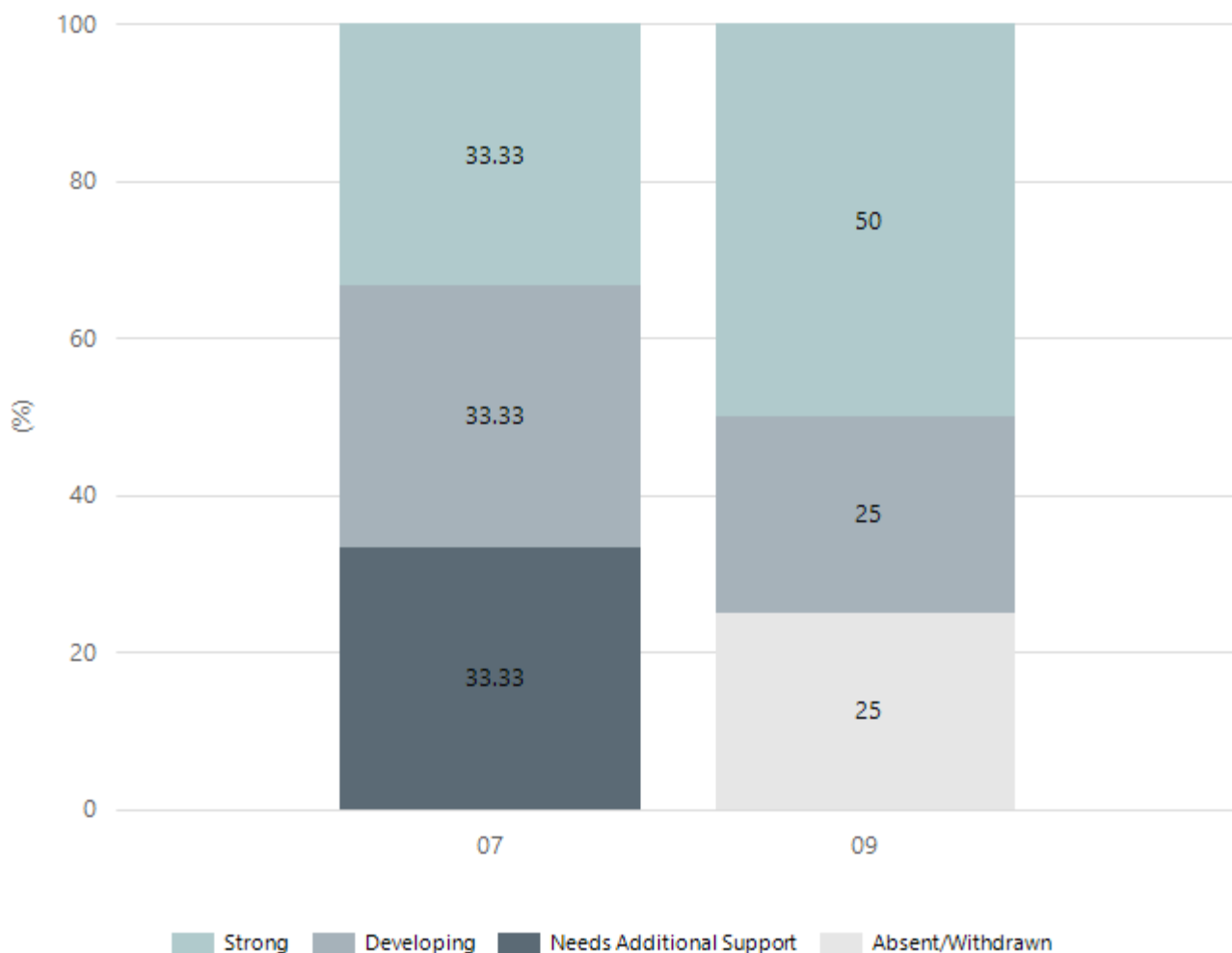
Numeracy



Year Level	07	09
Strong	0	1
Developing	0	2
Needs Additional Support	3	0
Absent/Withdrawn	0	1
Total	3	4

Data Source: Department for Education Assessment Data Holdings, 2023. When there are less than six students in a cohort, no data is supplied. Only data for Aboriginal learners is displayed.

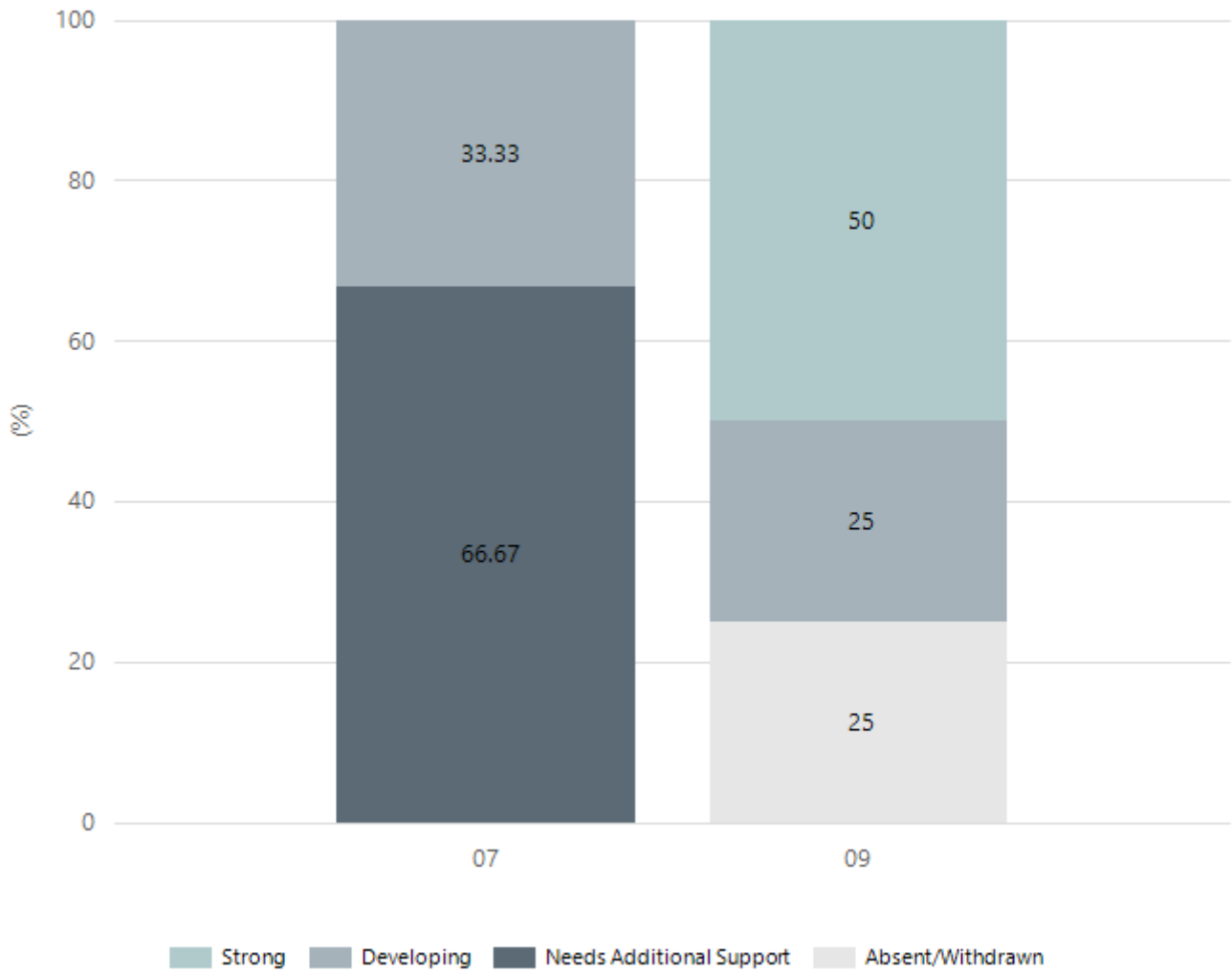
Reading



Year Level	07	09
Strong	1	2
Developing	1	1
Needs Additional Support	1	0
Absent/Withdrawn	0	1
Total	3	4

Data Source: Department for Education Assessment Data Holdings, 2023. When there are less than six students in a cohort, no data is supplied. Only data for Aboriginal learners is displayed.

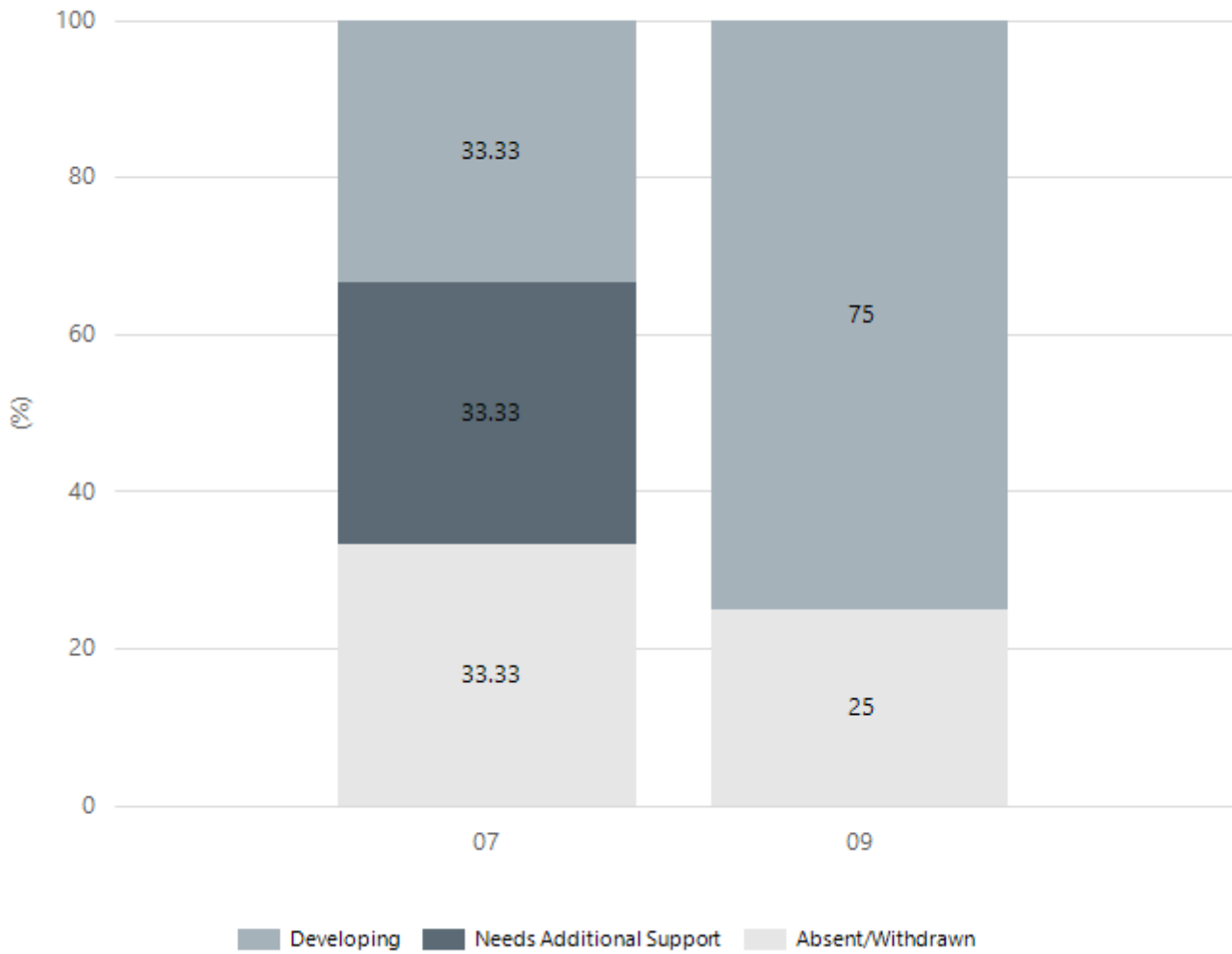
Writing



Year Level	07	09
Strong	0	2
Developing	1	1
Needs Additional Support	2	0
Absent/Withdrawn	0	1
Total	3	4

Data Source: Department for Education Assessment Data Holdings, 2023. When there are less than six students in a cohort, no data is supplied. Only data for Aboriginal learners is displayed.

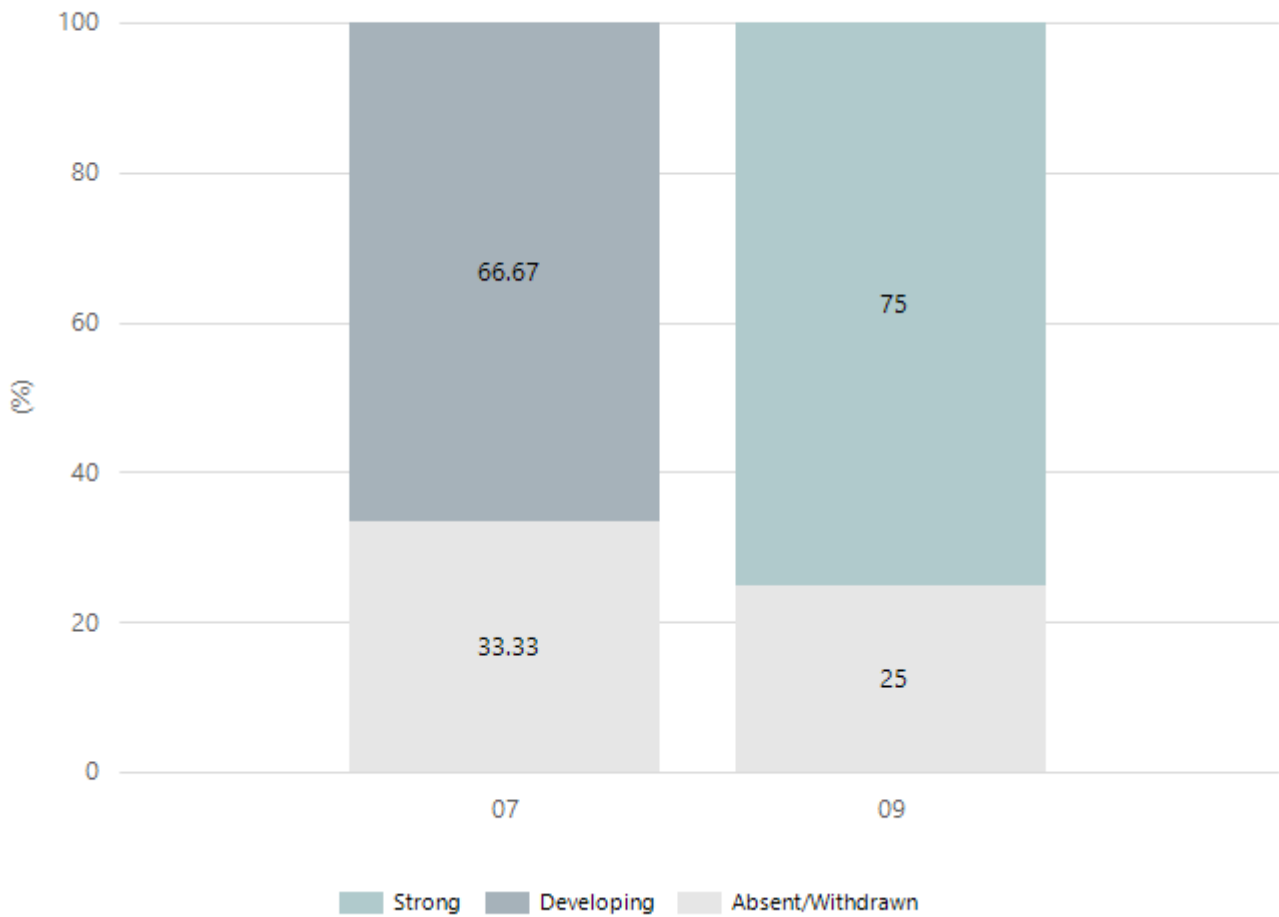
Grammar



Year Level	07	09
Developing	1	3
Needs Additional Support	1	0
Absent/Withdrawn	1	1
Total	3	4

Data Source: Department for Education Assessment Data Holdings, 2023. When there are less than six students in a cohort, no data is supplied. Only data for Aboriginal learners is displayed.

Spelling



Year Level	07	09
Strong	0	3
Developing	2	0
Absent/Withdrawn	1	1
Total	3	4

Data Source: Department for Education Assessment Data Holdings, 2023. When there are less than six students in a cohort, no data is supplied. Only data for Aboriginal learners is displayed.

South Australian Certificate of Education - SACE

SACE Stage 2 Grades - Percentage of grades that are C- or above for attempted SACE subjects (SEA)

2020	2021	2022	2023
97%	100%	99%	100%

Data Source: SACE School Data Reports, as of February 2023 for 2020-2022. 2023 SACE results are School supplied data. When there are less than six students, no data is supplied. Due to rounding of percentages, total results may not add up to 100%.

SACE Stage 2 Grade Distribution

Grade	2020	2021	2022	2023
A+	1%	0%	0%	1%
A	8%	6%	6%	7%
A-	8%	9%	11%	13%
B+	15%	10%	12%	16%
B	14%	17%	17%	18%
B-	13%	18%	18%	17%
C+	17%	19%	19%	15%
C	17%	18%	14%	12%
C-	3%	2%	1%	1%
D+	3%	0%	0%	0%
D	0%	0%	0%	0%
E+	0%	0%	0%	0%

Data Source: SACE School Data Reports, as of February 2023 for 2020-2022. 2023 SACE results are School supplied data. When there are less than six students, no data is supplied. Due to rounding of percentages, total results may not add up to 100%.

SACE Completion - Percentage of completers out of those students who had the potential to complete their SACE in October that year

2020	2021	2022	2023
98%	99%	100%	100%

Data Source: SACE School Data Reports, as of February 2023 for 2020-2022. 2023 SACE results are School supplied data. When there are less than six students, no data is supplied. Due to rounding of percentages, total results may not add up to 100%.

Year 12 Students undertaking Vocational or Trade Training (VET)

	2021	2022	2023
Percentage of Year 12 students undertaking Vocational Training or Trade Training	22%	21%	17%
Percentage of Year 12 students attaining a Year 12 certificate or equivalent VET qualification	62%	46%	51%

Data Source: School supplied data

School Attendance

Year Level	2021	2022	2023
Reception	92.5%	87.5%	91.0%
Year 01	91.9%	90.3%	91.1%
Year 02	92.5%	88.7%	92.6%
Year 03	89.8%	86.5%	92.5%
Year 04	92.2%	88.4%	88.4%
Year 05	93.0%	88.5%	90.3%
Year 06	91.0%	87.4%	85.9%
Year 07	89.6%	85.1%	87.1%
Year 08	87.1%	85.8%	83.8%
Year 09	85.9%	75.1%	83.2%
Year 10	86.5%	78.4%	82.5%
Year 11	79.6%	79.5%	79.0%
Year 12	82.5%	80.8%	85.8%
Secondary Other	73.6%	98.0%	-
Total	87.7%	85.7%	87.2%

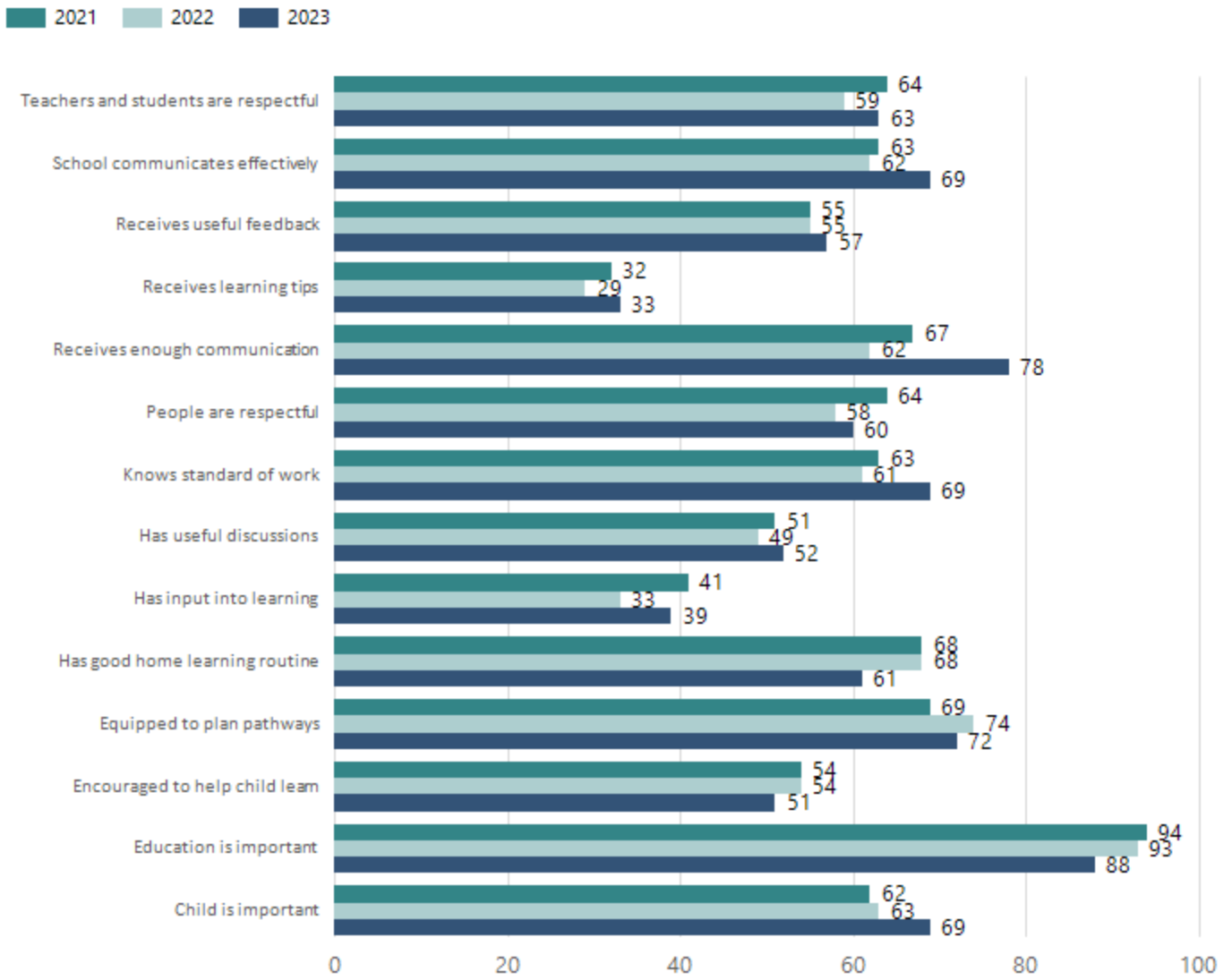
Data Source: Department for Education Attendance Data, Semester 1 Report 2023. A blank cell indicates there were no students enrolled. 'Primary Other' includes students enrolled in specialised education options. 'Secondary Other' includes students who have already spent a year at Year 12 and elected to undertake further study at Year 12.

Attendance Comment

In South Australia, all children and young people must be in school from 6 years to 16 years old. They must attend a government or non-government school full time. From age 16 to 17 however, young people must attend school or an approved learning program (such as an apprenticeship, traineeship, accredited course or university). Schools and parents must encourage and support students to come to school every day. Parents and caregivers must make sure their child is enrolled in a school, and attends school all day and everyday it is open, unless a child is sick or has an approved exemption. Teachers and leaders actively follow up when a student misses school, including recording all absences and non-attendance. All schools in South Australia have local attendance procedures governed under the Education and Children's Services Regulations 2020.

Parent Opinion Survey Results

Proportion of agree/strongly agree response(%)



Data Source: 2023 Department for Education Parent Opinions Survey, Term 3 2023.

Intended Destination

Leave Reason	Number	%
NG - ATTENDING NON-GOV SCHOOL IN SA	15	10.0%
OV - LEFT SA FOR OVERSEAS	61	41.0%
PE - PAID EMPLOYMENT IN SA	25	17.0%
TG - TRANSFERRED TO SA GOVERNMENT SCHOOL	31	21.0%

Data Source: Department for Education Destination Data Report, 2023. Data extract term 3 2023. Data shows recorded destinations for students that left the school in the previous year. Data is uploaded by schools in term 3 and may not reflect final or total figures at time of report creation.

Highest Qualifications held by the teaching workforce and workforce composition

All teachers at this school are qualified and registered with the SA Teachers Registration Board.

Qualification Level	Number of Qualifications
Bachelor's degrees or Diplomas	55
Postgraduate Qualifications	38

Data Source: Data extracted from Mandatory Workforce Information Collections as on the last pay date of June 2023. As self-reported by staff in the system.

Please note: Data includes staff who are Actively employed and on extended paid leave. Please note only the highest qualification of the Teaching staff is reported. Excludes any number of other certifications earned.

Workforce composition including indigenous staff

	Teaching Staff		Non-Teaching Staff	
	Indigenous	Non-Indigenous	Indigenous	Non-Indigenous
Full-Time Equivalents	1.0	81.9	0.9	29.9
Persons	1.0	92.0	1.0	38.0

Data Source: Data extracted from Mandatory Workforce Information Collection as on the last pay date of June 2023.

Please note: Data includes staff who are actively employed and on extended paid leave. "Indigenous category" is self-reported by staff in the system.

Financial Statement

Funding Source	Amount
Grants: State	\$13,456,111
Grants: Commonwealth	\$3,200
Parent Contributions	\$924,034
Fund Raising	\$8,670
Other	\$2,550

Data Source: School supplied data.